

## 【Caution】

- 1) This product and this manual are the work of I O DATA DEVICE,INC. Therefore, unauthorized reproduction, copying, reprinting or modification of this product and this manual, in whole or in part, is prohibited by law.
  - 2) The contents of this product and this manual are subject to change without notice.
  - 3) Please understand that, regardless of the above, this company shall not be held liable for any effects other than those resulting from operation of this product.
  - 4) When using this support software, only one copy may be made to keep for backup purposes.
  - 5) This support software may be used on only one personal computer at a time.
  - 6) Intellectual property rights, including the copyright for this support software are not transferred to the customer.
  - 7) The customer is not given the right to open or use the source code for this support software in any case whatsoever. Also, analysis, reverse assembly, reverse compilation or other reverse engineering in order to clarify the source code is prohibited.
  - 8) Time sharing, lease, rental, sales, transfer or sub-licensing of this software is prohibited without obtaining prior written consent.
  - 9) This product is not intended for use as equipment or device related to the maintenance of human life or as equipment or a device for which a high level of reliability is necessary, or in combination with such equipment or devices, such as instruments for medical treatment, equipment or instruments for nuclear power generation, instruments used in aircraft or in spacecraft, or transportation equipment or devices. If this product is used in the equipment or devices in such equipment, as in the control system, and this product fails, resulting in an accident involving the human body, in a fire or damage to society, etc., this company shall not be held liable. Extreme caution is urged in the area of thorough safety design when engaging in redundancy design, design of measures to prevent the spread of fire, foolproofing design, etc. in equipment and devices, and in control systems, etc.
  - 10) The customer may not grant, entrust, transfer the right to use this product or in any other way dispose of it to any third party.
  - 11) When a customer violates any of the conditions of these cautions at any time, this company can terminate the customer's use of this product.
- I-O DATA is a registered trademark of I-ODATA DEVICE,INC.
  - HyperHyde is a trademark of I-ODATA DEVICE,INC.
  - Microsoft and Windows are registered trademarks of the US Microsoft Corporation.
  - Other general company names and product names are the trademarks or registered trademarks of each respective company.

HyperHyde Operation Manual

September.14.2000 81085-01

Published by I-O DATA DEVICE, INC.

3-10 Sakurada-Machi, Kanazawa, Ishikawa-Pref. 920-8512.

I-O DATA DEVICE, Inc. All rights reserved.

This product and this manual are protected by copyright law.  
Unauthorized copying, reproduction, reprinting or modification  
is therefore prohibited.

Before using this product, please read this manual thoroughly and get a good understanding of how to use it correctly.



Read the necessary portions of this manual in the following sequence.

• • • • • Chapter 1



• • • • • Chapter 2



• • • • • Chapter 3



## Reading this Manual

When you read	It means
Windows 98	Microsoft® Windows® 98 Operating System
Windows 95	Microsoft® Windows® 95 Operating System
Windows	Both Windows 98 and Windows 95

## Cautions During Use



## Warnings

If instructions with this mark are not followed, it could cause death or serious injury to the user.

- **Store the MultiMediaCard and the batteries well out of the reach of children.**
- 

When removing and storing the MultiMediaCard or batteries, place them where infants and small children cannot reach them so that they cannot be swallowed by accident.

If a child should swallow them by accident, consult a physician immediately.

- **Do not allow the equipment to become wet or use it in a bathroom.**
- 

Could cause fire or electric shock. Be especially careful when using this product in a bathroom, outdoors on a rainy day, when it is snowing, when at the beach or at the edge of a body of water.

- **Do not drive or walk down streets while using earphones.**
- 

Particularly when crossing at a railroad crossing or at an intersection, not being able to hear the sounds around you could result in a traffic accident.



## Caution

If instructions with this mark are not followed, it could cause injury to persons or physical damage.

- **Do not create MP3 data for the convenience of third parties.**
- 

It is against the law to create MP3 data without the permission of the copyright holder for the purpose of conveying it to a third party by sales or distribution. Also, reproduction, distribution, regardless of whether it is free or for profit, or posting on the Internet of voice files, music files or audio CD's, etc. except for private personal entertainment, is strictly forbidden by copyright law and international treaties.

- **Insert the stipulated batteries in the correct direction (plus, minus.)**
- 

Do not use batteries other than those specified. Also, insert batteries with the plus and minus poles correctly oriented. If a mistake is made, it could cause the batteries to leak fluid or break, etc., or could cause fire or injury or damage the device.

- **Remove the batteries if the equipment is not to be used for more than one month.**
- 

Could cause the batteries to leak fluid, or could cause fire or injury or damage the device. If battery fluid leaks, be sure to wipe the battery case out thoroughly and insert new batteries.

- **Do not remove the MultiMediaCard card during**

**recording and playback under any circumstances.**

---

Could cause the device to break down. When removing the MultiMediaCard , be sure to stop the player first. (The main lamp and record lamp should both be off.)



Introduction .....	
Cautions During Use .....	
Contents .....	

# 1

## ***Playing with the HyperHyde***

Packing Case Contents .....	1
What is the HyperHyde? .....	3
Buttons and Lamps .....	5
Inserting the Battery .....	7
To check the battery level .....	8
Inserting a Card .....	9
Attaching the Belt Holder .....	11
Attaching the Neck Strap .....	12
Personal Computer Operating Environment .....	13

# 2

## ***Let's Listen to Music***

Process In Order to Listen to Music .....	17
Preparing the Computer .....	20
Recording to the HyperHyde .....	23
Listening to Music on the HyperHyde .....	29
Erasing Recorded Songs .....	32
When Using 2 Cards .....	33

# 3

## *Let's make voice memos*

Recording a Voice Memo.....	36
Opening a Voice Memo.....	38

# 4

## *Before Concluding that this product is broken down*

Trouble Q & A <Contents>.....	43
Trouble Q & A.....	44
Simple Maintenance .....	50
When Deleting installed software .....	51

# 5

## *Appendix*

Hardware Specifications .....	53
Explanation of Terms.....	54

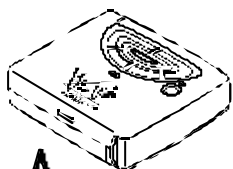


# 1

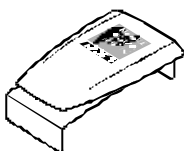
## *Playing with the HyperHyde*

### **Packing Case Contents**

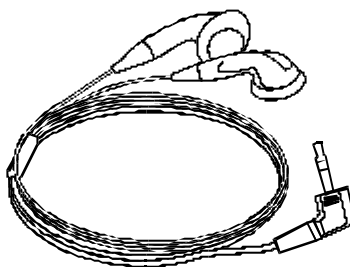
Check the case to make sure the following items are all included.



**A**

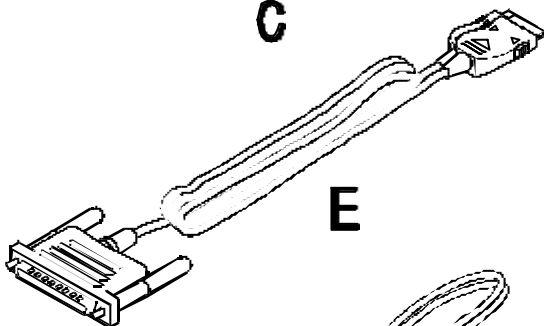
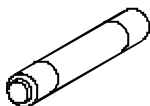


**B**



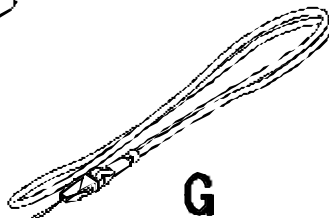
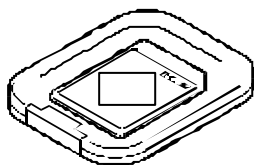
**C**

**D**



**E**

**F**



**G**

## Packing Case Contents

Check Mark	No.	Contents	Quantity
	A	HyperHyde Unit	1
	B	Belt Holder	1
	C	Earphone	1
	D	Size AAA Battery (For checking operation)	1
	E	Exclusive Parallel Cable	1
	F	MultiMediaCard (32Mbyte) [with a carrying case]	1
	G	Neck Strap	1
	-	Support Software floppy disk. The following software is included on this floppy disk. • HyperHyde Manager	1
✓	-	HyperHyde Operation Manual (This manual.)	1
	-	Quick Find Operation Chart	1
	-	Warranty	1

Make a check mark (✓) in the Check Mark column as you identify each of the packed items.



### Caution!

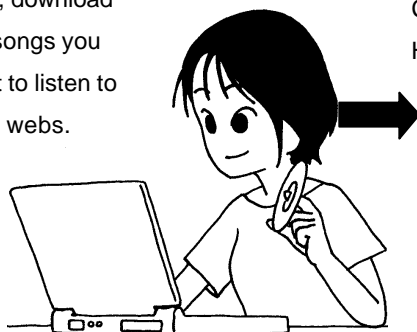
1. Keep the case and packing materials in a safe place and use them if it is necessary to send the HyperHyde for repairs, etc.

# What is the HyperHyde?

## Music any time, anywhere

The HyperHyde is an ultra-compact [bite size], ultralight portable music player. If your favorite music is recorded on a MultiMedia Card, you can enjoy listening to music anytime, anywhere.

First, download  
the songs you  
want to listen to  
from webs.



Copy them to the  
HyperHyde.



That is all it takes. Now you can listen to your music any time, anywhere.



It is tiny, and the music doesn't  
skip, so no matter when, you can  
enjoy high sound quality.

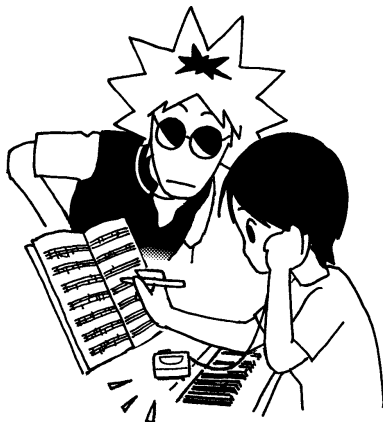
Don't do like this out on the street.  
Please go to a park or plaza, where there is no  
danger of a traffic accident, to enjoy your music.

## Let's Record Something.

One more convenient function of the HyperHyde is the [Voice Memo] function. Anything at all that makes noise can be recorded. So, how can you put it to use?



If a melody pops into your head, you can record it right on the spot.



Use it to record and play back when composing music.



Besides that,

- Use it to take memos of a conference and play it back to prepare the minutes.
- Keep a voice exchange diary with a friend.
- Tell your family that you have gone out.
- Use it in place of a schedule book.

When it is too much trouble to write something down, you can press the switch and start recording any time.

The uses for Voice Memo are limitless.

Use it in place of memos at your travel destination.

Use it to record a reporter's impressions or in interviews.

# Buttons and Lamps

## Main Lamp (pp. 8, 30, 39)

It goes off when the player is stopped.  
It lights up or blinks to inform the user of the current state. Its color when it lights up also informs the user of the amount of battery power remaining.

## Rewind Button (pp. 30, 32, 39)

Pressing this button during playback causes the player to start replaying the current song or voice memo from the top. If it is pressed two times in succession, the previous song or voice memo is replayed.

## Volume — Button (pp. 29, 30, 36, 38, 39)

If this button is pressed during playback, the volume is lowered. If it is pressed while the player is stopped, it switches the player between the music and voice modes.

## Play Button (pp. 24, 29, 38)

This button plays or stops music or voice memos. If it is pressed for a long time, the player stops.

## Jump Songs / Fast Forward Button (pp. 30, 32, 39)

If this button is pressed during playback, the player jumps to the next song or voice memo. If it is pressed for a long time, it fast forwards the currently playing song.

## Record Lamp (pp. 33, 37)

This lamp lights up or blinks during recording or playback of a voice memo to indicate the current status. Also, when selecting a slot, the color of this lamp indicates the slot that has been selected.

## Record Button (p. 37)

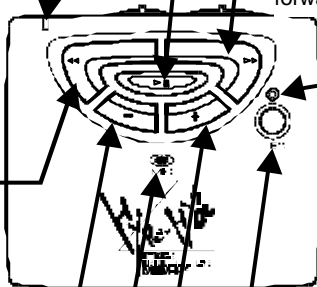
Press this button to start recording or finish recording a voice memo.

## Volume + Button (pp. 33, 34, 39)

If this button is pressed during playback, the volume is increased. Also, use it when selecting a slot.

## Microphone

This mike picks up sounds during recording of a voice memo.



## Buttons and Lamps

### Sound Quality Button

(p. 31)

When the player is in the music mode, this button is used to select the sound quality.

### Hold Button (p. 31)

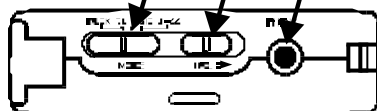
When this button is in the Hold position, all button operations are disabled (to prevent wrong operation).

### Earphone Jack (pp. 29, 38)

Insert the accessory earphone plug in this jack.

### Strap Hole (p. 12)

Attach the accessory neck strap here.



### Parallel Connector (pp. 24, 26)

When connecting the player to a personal computer, remove the rubber cover and insert the accessory parallel cable.

### Battery Cover (p. 7)

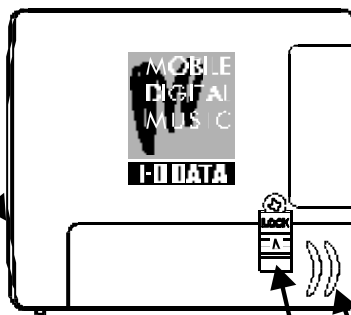
Open this cover to insert a size AAA alkaline dry battery.

### Battery Cover Lock (p. 7)

This locks the battery cover so it cannot be removed.

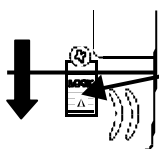
### Card Slot (p. 9)

When the cover is opened MultiMediaCards can be inserted. (Maximum 2)



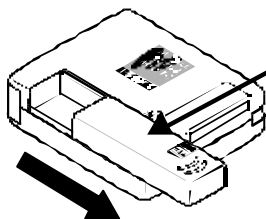
# Inserting the Battery

The accessory dry battery is for checking operation. Replace it with a new battery as soon as possible. Be sure to use an alkaline dry battery.



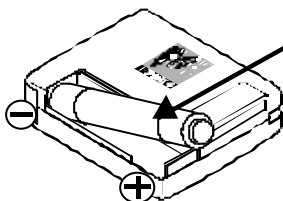
## 1 Release the battery cover lock.

Slide the lock button on the back of the HyperHyde as shown by the arrow mark in the figure and release the lock.



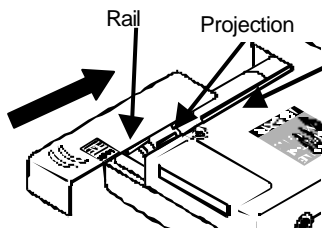
## 2 Remove the battery

Slide the battery cover and remove it. When it is difficult to slide it, catch your fingernail in the 3-day moon shaped grooves at the end of the cover and push the cover to remove it.



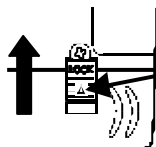
## 3 Insert the size AAA alkaline

Set the battery, being sure that the plus and minus poles are correctly oriented. Push the battery into the slot fully until it clicks.



## 4 Close the battery cover.

Align the rail in the battery cover with the projection on the HyperHyde body, then slide the cover straight to close it. If the groove and the projection do not match, the cover will not snap shut. Push the cover on until the snapping sound is emitted.

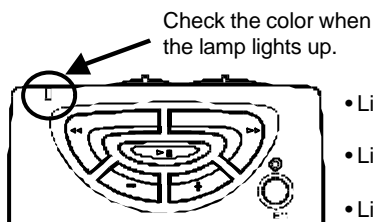


## 5 Lock the battery cover.

Slide the lock button in the arrow direction until it is in the state shown in the figure and lock the battery cover.

## To check the battery level

When playing music or voice memos, the main lamp lights up, but the battery level can be checked by the color of the lamp.



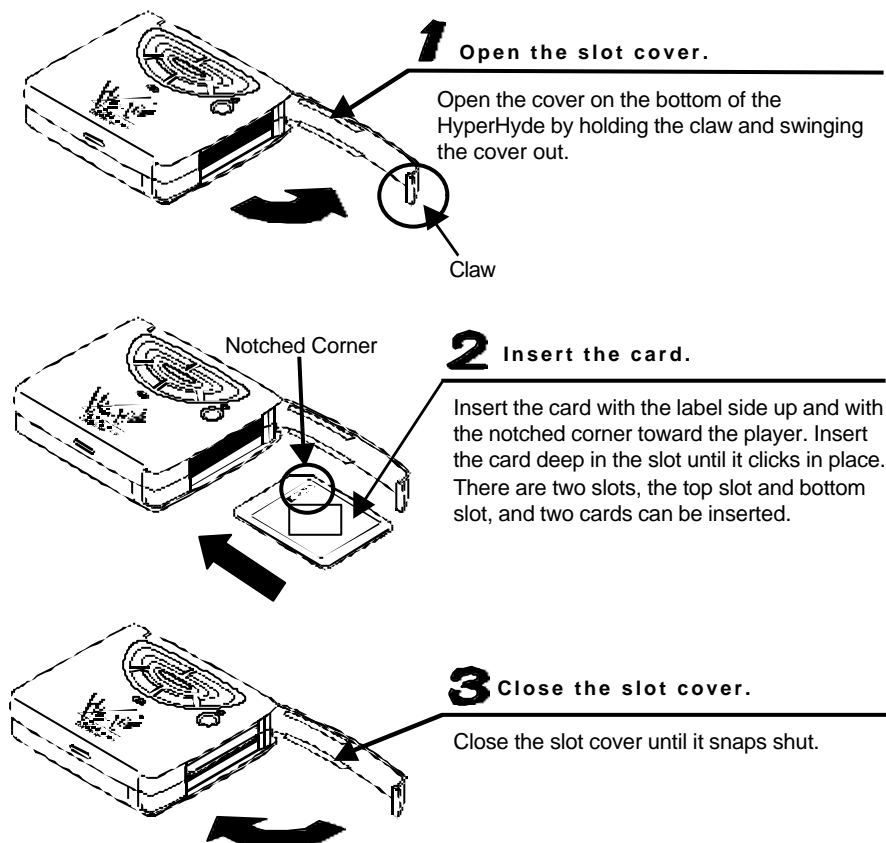
- Lights up green: Battery still has enough power.
- Lights up orange: Battery power is at 2/3 full charge or lower.
- Lights up red: Battery power is at 1/3 or lower. Replace the battery some time soon.
- Doesn't light up at all: The battery is dead. Replace it.



## Inserting a Card

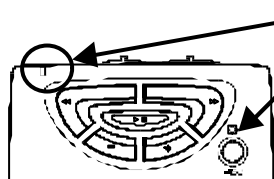
A maximum of 2 MultiMediaCards (hereafter, simply called card) can be inserted in the HyperHyde's card slot. Insertion and removal of the cards is explained here.

### Inserting the Card



## Removing Cards

### 1 Make sure the player is stopped.

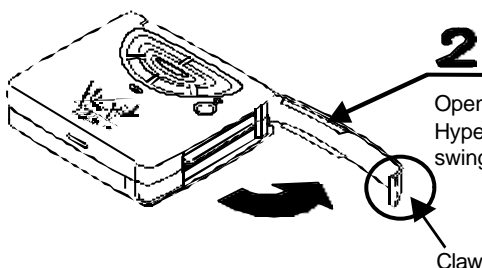


Make sure the main lamp and the record lamp are both off.



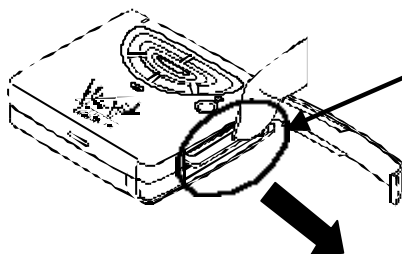
When the player is not stopped, (if it is playing or recording), absolutely do not attempt to remove a card.

### 2 Open the slot cover.



Open the cover on the bottom of the HyperHyde by holding the claw and swinging the cover out.

### 3 Remove the card.



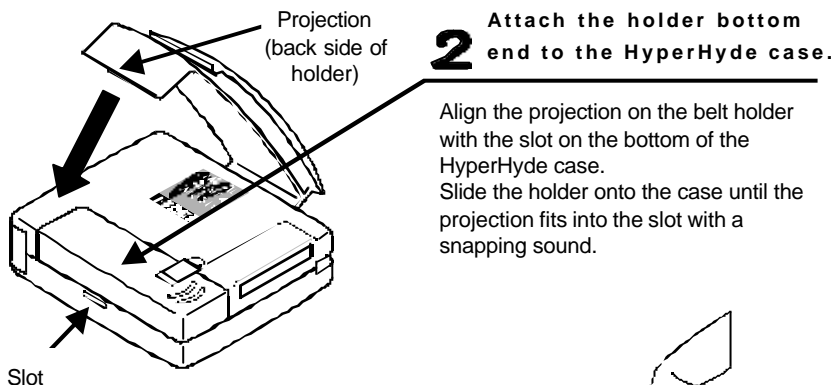
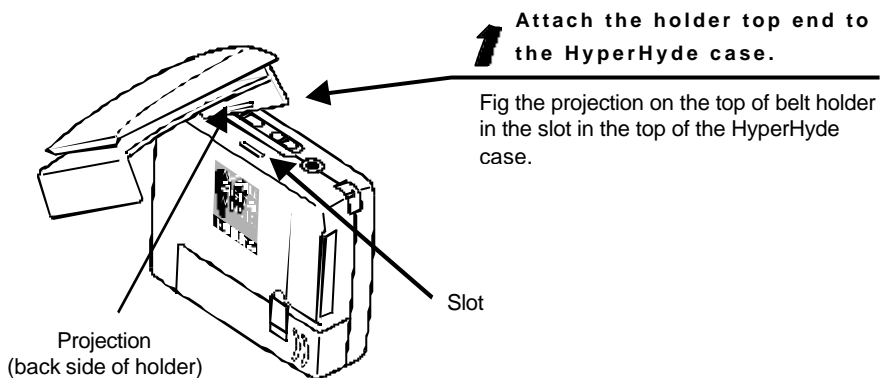
Catch hold of the groove in the card and slide it straight out to remove it.

Finally, close the slot cover.

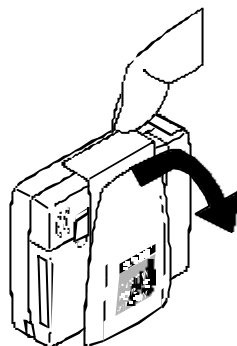
Place the removed card in the accessory carrying case and keep it in a place where it cannot be easily reached by children, etc.

## Attaching the Belt Holder

A belt holder for carrying the HyperHyde is included. Please use it so that it matches your method of use.

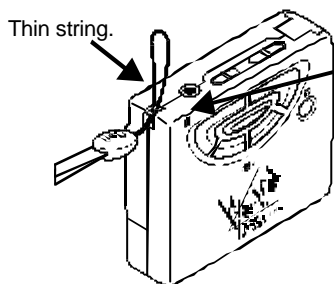


When removing the belt holder, catch hold of the bottom edge of the holder with your fingernail and pull it off.



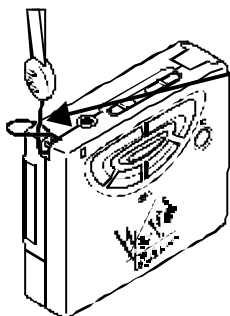
## Attaching the Neck Strap

A special neck strap is provided with the HyperHyde. Please use it in accordance with your method of use.



**1** Pass the thin string end of the strap through the hole.

Pass the thin string end of the accessory neck strap through the HyperHyde's strap hole.



**2** Pass the neck strap through the loop in the thin string.

After passing the entire neck strap through the loop in the thin string that was passed through the strap hole in the case, pull on the neck strap to tighten it fully.

## Personal Computer Operating Environment

In order to record music on the cards in the HyperHyde, the following personal computer environment is required. (If it is being used for voice memos, a personal computer is not particularly required.)

CPU	MMX Pentium 166 MHz or higher (Pentium II 266 MHz or higher is recommended.)
Compatible OS	Windows 98 (including Windows 98 Second Edition) Windows 95 OSR2 or later version (See the next page for the method of checking the OS version.)
Main Memory	32 MBytes or more (64 MBytes or more is recommended.)
Hard Disk	10 MBytes or more free space is required.
Parallel Port (Printer Port)	D-sub 25-pin (Female) Used in the ECP Mode (Refer to the next page for the method of checking.) * This player cannot be used with I/O port 3BCh (See p. 15.)



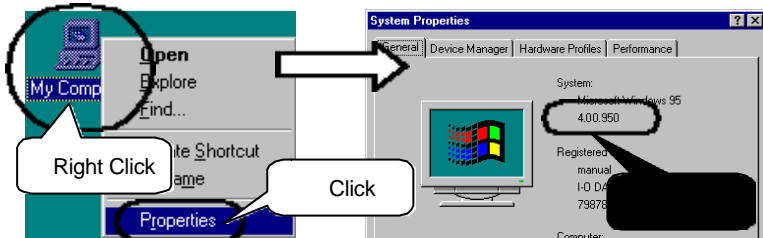
### Caution!

1. If files are copied to MultiMediaCards from an OS other than Windows 95/98 using a card adapter, etc., the player's operation is not covered by the warranty.
2. In some personal computer models, the Standby and Suspend functions may not operate properly. Do not use Standby and Suspend when using HyperHyde Manager.
3. File operation from the DOS prompt is not supported.

## Personal Computer Operating Environment

### Windows 95 Check Method

Right click on the [My Computer] icon, then select [Properties].  
Check the version displayed on the screen.



- **4.00.950 or 4.00.950a**

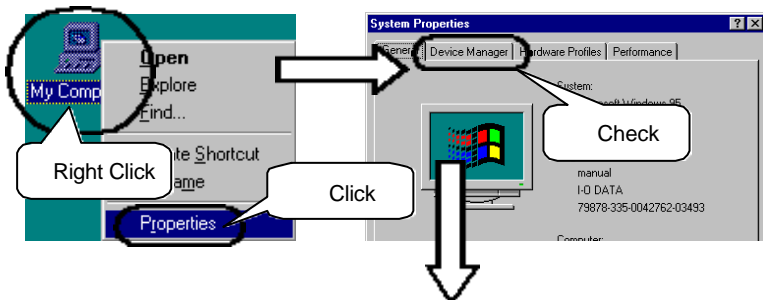
Unfortunately, the HyperHyde cannot be used with this version of Windows 95. Please upgrade to a higher version of Windows.

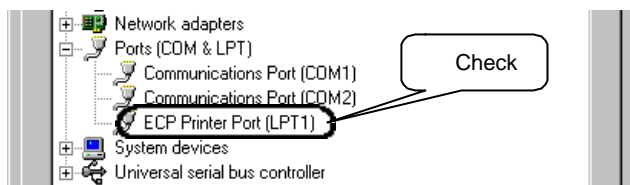
- **4.00.950B or 4.00.950C**

The HyperHyde can be used with this version of Windows.

### Checking the ECP Mode

Right click on the [My Computer] icon, then select [Properties].  
After clicking [Device Manager], double click on [Ports].  
Check to make sure an [ECP Printer Port] is displayed.





When [Printer Port]  
is not displayed.

See p. 48 before concluding  
that there is some kind of  
trouble with the computer.

When ECP Printer Port  
is not displayed.

See p. 48 before concluding  
that there is some kind of  
trouble with the computer.

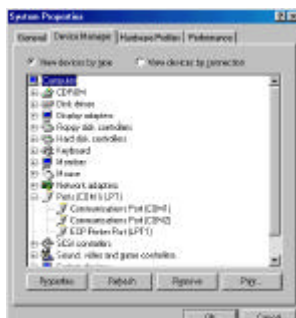
### Printer Port Resources Check Method

If the I/O Port for the ECP printer port is 3BCh, music cannot be recorded normally onto a card. (378h is recommended.)

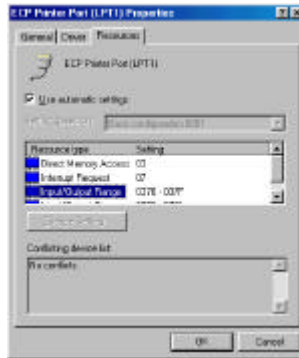
Check the I/O port address by the following procedure and if it is 3BCh, change the I/O port address of the Printer Port in the personal computer's BIOS settings.

### <Check Method>

1. Display ECP Printer Port using the procedure on the previous page.
2. Click ECP Printer Port, then click the [Properties] button.



3. Check if the I/O Port Address is 3BCh with the Resources tab.



If 3BCh is being used, set a different address for the I/O port address in the Printer Port setting in the personal computer's BIOS. See the personal computer's operation manual for the BIOS setting method. (If you do not understand, ask your personal computer's maker.)

### **If you use a COMPAQ Personal Computer.**

If you use Compaq Management Agents, HyperHyde Manager may not operate normally, so install HyperHyde Manager after updating to the latest version of Compaq Management Agents.

**\* Please inquire of COMPAQ concerning how to update Compaq Management Agents.**



# 2 *Let's Listen to Music*

## Process In Order to Listen to Music

Nothing is recorded on the card included with the HyperHyde when it is shipped, so in order to listen to music, it is first necessary to record music on the card. Here, Record means to copy music data files (MP3 data) which are saved on the personal computer to the card. One song is saved on the HyperHyde card as one file. The HyperHyde card uses exactly the same operation as a personal computer's hard disk to copy files (record music) and delete files (erase music).



Install HyperHyde Manager in your personal computer. See p. 20, Preparing the Personal Computer.

After installation, the number of Removable Disk increases by one. This Removable Disk is the HyperHyde card.



Acquire music data (MP3 data) that can be played on the HyperHyde.

The method is described below.

- Download files from Internet sights.  
See List of Download Sites on p. 19.



Let's listen to music.

## Process In Order to Listen to Music



Connect the HyperHyde to your personal computer. Copy MP3 data files to the HyperHyde. See Recording the HyperHyde. on p. 23.

After connecting the HyperHyde to the personal computer using the accessory parallel cable, use Windows Explorer, etc. to copy MP3 files to the Removable Disk (HyperHyde card).



Play the music on the HyperHyde.  
See Listening to Music on the HyperHyde. on p. 29.

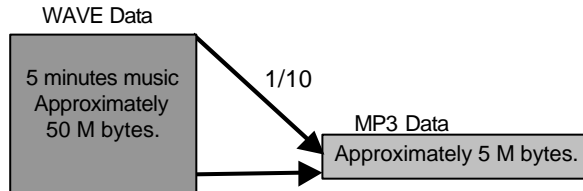


### **Caution!**

It is illegal to create MP3 data for the purpose of passing it on to third parties through sales or distribution without the permission of the copyright holder. Also, except in cases where you wish to enjoy music personally, it is strictly forbidden by copyright law and international treaties to reproduce, distribute, whether free or for profit, or post voice files, music files and audio CD's, etc. on the Internet. Please use the HyperHyde with this understanding in mind.

## What is MP3 Data?

The music data that can be played on the HyperHyde is MP3 data. MP3 is an abbreviation for Mpeg Audio Layer 3. The principle feature of this format is that it compresses music data down to 1/10 its normal volume without any audible deterioration in the sound quality from the CD quality sound. Since the volume of data is greatly reduced, this format is appropriate for use with portable music players and for inclusion as music data in electronic mail.



## List of Download Sites

If you use the Internet, you can download music files in the MP3 data format either free or for pay legally, and can obtain the latest information concerning the MP3 technology. Some of the major sites related to MP3 are listed below.

- <http://www.mp3.com>
- <http://www.musicmatch.com>
- <http://www.songs.com>

## Preparing the Computer

Prepare the computer by performing the following 2 tasks.

- Install HyperHyde Manager.
- Check to make sure it is installed correctly.

### Install HyperHyde Manager.

**1** Set the Support Software Floppy Disk in the FD drive.

**2** Double-Click the My Computer icon.

**3** Double-Click the appropriate drive icon:  
3 1/2 Floppy[ A] or 3 1/2 Floppy[ B].

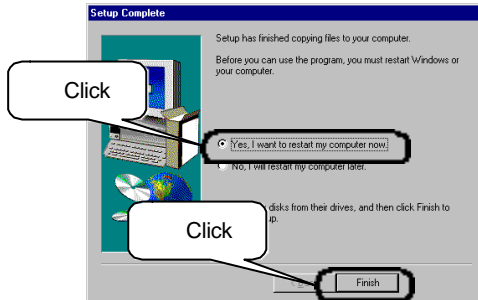
**4** Double-Click the Win9X.

**5** Double-Click the Setup.exe.  
The HyperHyde Manager Setup dialog appears.

**6**

Carry out installation according to the instructions on the screen.

When the following screen is displayed, select [Yes, restart my computer now.], then click the [Finish] button.



**7**

When the personal computer restarts, installation is completed.

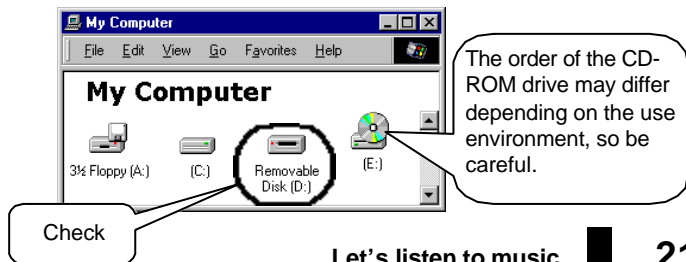
A HyperHyde icon is created on the Desktop, so check to make sure it is there. The drive name (drive D in the case at right) may differ depending on the environment you use on your computer.

### Checking after Installation is Completed

**1**

Double click on the My Computer icon and check if [Removable Disk] is displayed.

The drive name will differ depending on the use environment.



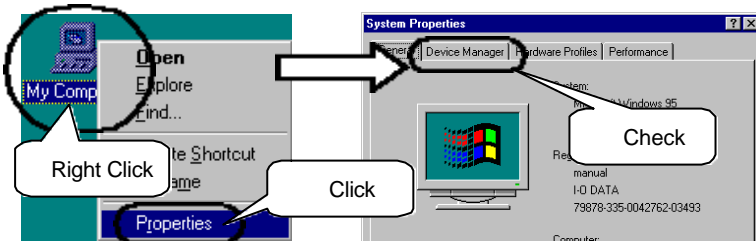
## Preparing the Computer

When Removable Disk  
is not displayed.

See p. 48 before  
concluding that this product  
is broken down.

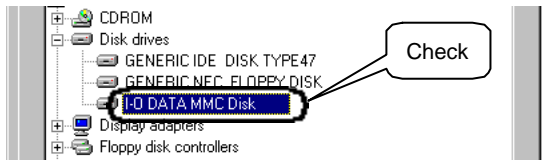
2

Right click on the My Computer icon, then select [Properties]. Click on the [Device Manager] tab.



3

Double click on [Disk Drive], then confirm that [I-O DATA MMC Disk] is displayed.



When [I-O DATA MMC  
Disk] is not displayed.

See p. 49 before  
concluding that this  
product is broken down.



# Recording to the HyperHyde

## Connect the HyperHyde to your personal computer.

### Check

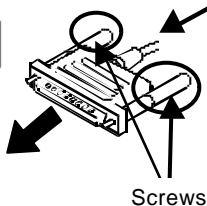
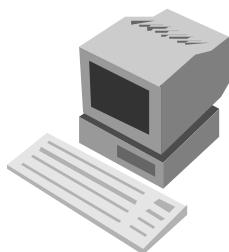
Before making connections, make sure the following preparations have been made.

- The personal computer's power should be turned on and Windows should be started. (connect the HyperHyde after starting Windows.)
- The HyperHyde should be stopped (with both the main lamp and record lamp off).



### Caution!

1. When starting and closing Windows, and when restarting, etc., do not connect the exclusive parallel cable for the HyperHyde to the computer. (Connect the parallel cable and use it after starting the personal computer.) Connect the HyperHyde after Windows has been fully started.
2. Printing with the printer cannot be done during recording with the HyperHyde, so exercise caution.



Screws

## 1

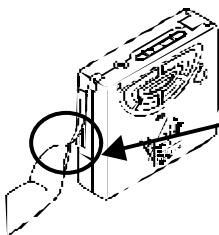
### Connect to the personal computer.

Connect the large connector end of the parallel cable to the personal computer's parallel port (printer port). Insert it fully so that it is tight, then tighten the screws on the left and right sides.

See your computer's operation manual for the location of the connector on your computer. If it is difficult to insert the connector, check the orientation of the connector.

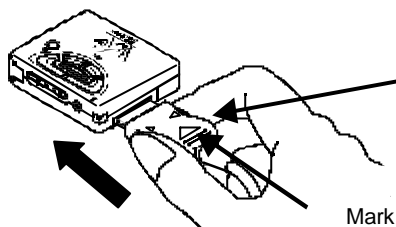
## 2

### Open the rubber cover.



Catch hold of the edge of the rubber cover with your fingernail, etc. and open the cover. (Be careful not to scratch any other parts when opening the rubber cover. The rubber cover is fastened at the top.)

## Recording to the HyperHyde



### 3 Connect the parallel cable.

Insert the parallel cable connector fully with the mark on top.

## Copy MP3 data to the HyperHyde.

### Check

Before copying data, make sure the follow preparations have been made.

- A card should be inserted in the HyperHyde.
- The battery's remaining charge should be sufficient.
- The parallel cable should be connected between the personal computer and the HyperHyde.
- MP3 files should be saved on the hard disk.

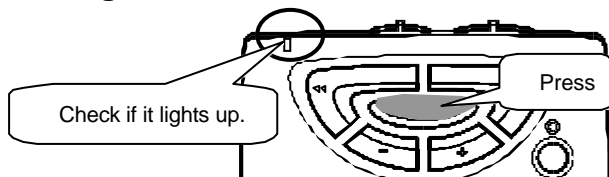


### Caution!

1. If the battery level is too low, it may not be possible to transfer data correctly. When transferring data, be sure to use a new battery.
2. Even in cases where files are created from a music CD, and even if the files have been acquired from the Internet, make sure that the source where the MP3 files are stored (copy source) is the hard disk.

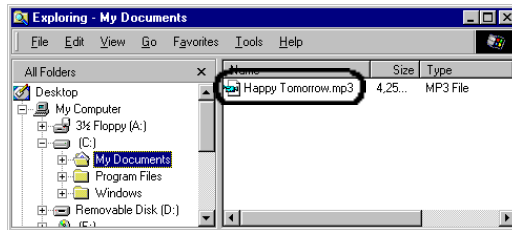


**Press the Play button. Make sure the main lamp goes on.**





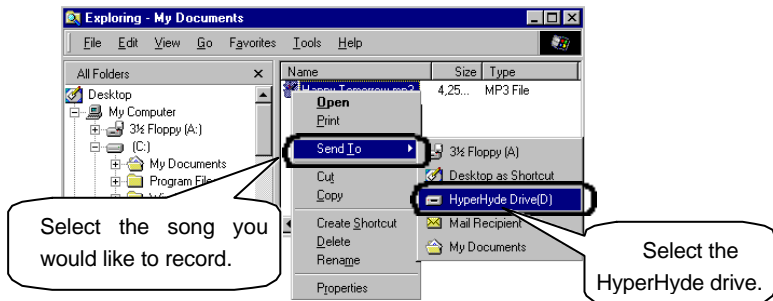
## 2 Open a folder where MP3 files are saved using Windows Explorer, etc.



## 3 Select a song you would like to record and copy the file to the HyperHyde's Removable Disk.

The recorded songs will play in the order in which they have been copied. In consideration of the order in which the songs are to be recorded, do not copy multiple files in a batch, but copy them one at a time.

Example of copying files using the Send function.



Besides the above copying method, cut and paste and drag and drop can also be used (the same as the normal file copy function).

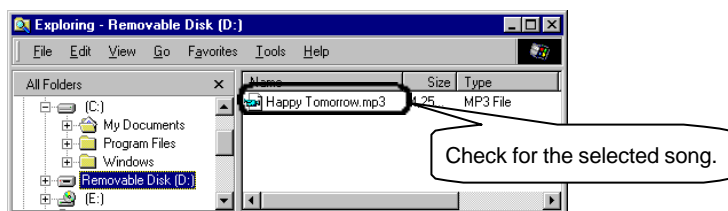
**4**

### Start copying.

Make sure the HyperHyde's main lamp is blinking. Wait as is until the main lamp changes from blinking to on constantly.

**5**

**Recording is completed when the file is displayed in the Removable Disk and the HyperHyde's main lamp goes on.**

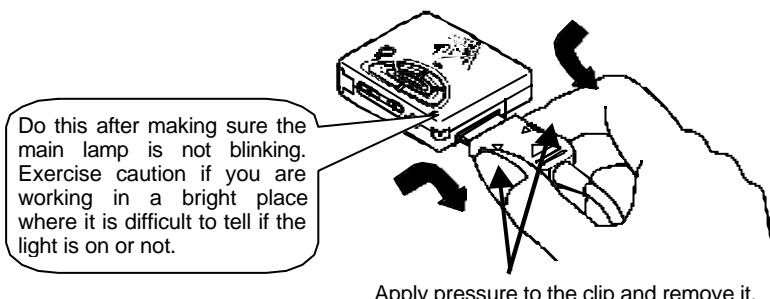


**6**

### **Make sure the HyperHyde's main lamp is not blinking, then disconnect the HyperHyde's parallel cable.**

While pressing on the clips on the left and right sides, pull the parallel cable out of the connector. Make sure the main lamp goes off.

When the cable is disconnected, close the connector's rubber cover.

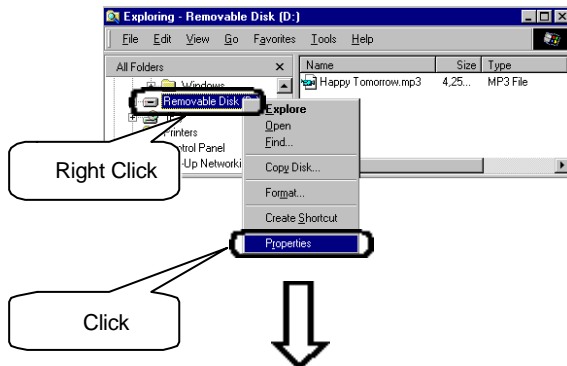


**Caution!**

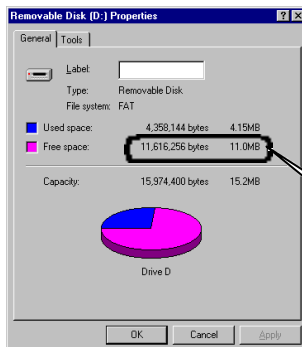
1. Due to copyright restrictions, MP3 files cannot be copied from the HyperHyde to a personal computer. It is recommended that your MP3 files stored on your computer not be erased.
2. If you are copying files on a card after deleting the data from it, etc., on rare occasions, skipping of notes, etc. may occur. If skipping occurs at the same place, either carry out defragmentation or erase all the data, then retransfer (record) the MP3 data to the card. See p. 42, Defragmentation for the defragmentation method.
3. During recording to the HyperHyde (while the main lamp is blinking), absolutely do not perform either of the following actions.
  - Disconnecting the parallel cable.
  - Operating the HyperHyde's buttons.

### Check the card's available space.

If there is no space available on the HyperHyde card, no more music can be recorded to it. When you desire to know how much more music can be recorded on a HyperHyde card, select the Removable Disk with the HyperHyde still connected, then check the available space on the card (the operation below). If you compare the available space with the size of the MP3 data files on the computer's hard disk, you can judge how much more data you can copy to the card.



## Recording to the HyperHyde



Check

[Determining the length of recording time that is possible]  
Using the following table, you can calculate roughly the amount of recording time that is still available . (The times here can only be considered as a rough guide.)

Mode	Sound Quality (Bit Rate)
High Sound Quality	128 Kbps (CD Quality)
Standard	96 Kbps (Roughly CD Quality)
Low Sound Quality	64 Kbps (FM Radio Quality)

Example) When you have 10 Mbytes of available space remaining, the bit rate for 1 second in the standard quality mode is 96 Kbps when making a standard MP3 file, so the number of bytes required for 1 minute would be calculated as follows.

$96 \text{ Kbps} \times 60 \text{ seconds} = 5,760 \text{ Kbits} = 720 \text{ Kbytes}$  (1 byte = 8 bits).

Since the remaining space available on the card is 10 Mbytes,  $10 \text{ Mbytes} = 10,240 \text{ Kbytes}$  (1 Mbyte = 1024 Kbytes).

$10,240 \text{ Kbytes} \div 720 \text{ Kbytes} = 14 \text{ minutes.}$

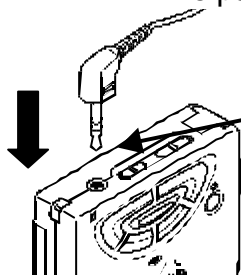


# Listening to Music on the HyperHyde

## Check

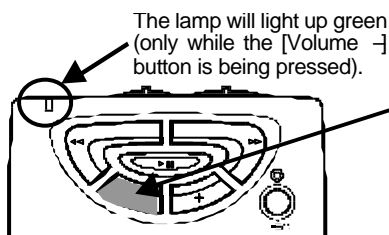
Before listening to music, make sure you have completed the following preparations.

- A size AAA alkaline dry battery should be inserted in the HyperHyde.
- A Card with music recorded on it should be inserted in the HyperHyde.
- The parallel cable should be disconnected.



## 1 Connect the earphone.

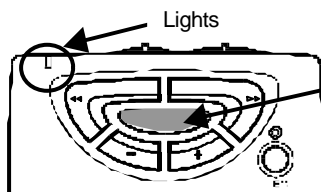
Insert the earphone plug in the HyperHyde's earphone jack.  
Make sure which side of the earphone set is for the left and which for the right, then place them in your ears.



## 2

### Press the [Volume -] button and set the HyperHyde in the music mode.

Press the [Volume -] button several times so that the main lamp lights up green.  
(The main lamp will go off when the [Volume -] button is released.)



## 3 Press the [Play] button.

Playing of music will start from the first song.

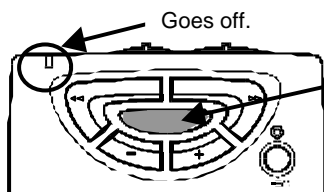


Check the color of the main lamp when it lights up and determine the battery level, how much charge is left.

- Lights up green: Battery still has enough power.
- Lights up orange: Battery power is at 2/3 full charge or lower.
- Lights up red: Battery power is at 1/3 full charge or lower. Replace the battery some time soon.

In the case of a new battery, it is possible to play the HyperHyde continuously for 7 hours.

## Listening to Music on the HyperHyde



**4**

To stop playing music, press the [Play] button for a long time.

Press the [Play] button for a long time, 1 second or longer to stop playing music (the main lamp is off).

When the [Play] button is pressed only a short time, the player pauses (the main lamp blinks). When in the Pause state, if the [Play] button is pressed again, playing of music resumes from the point where it was stopped.

### Operation during Playing of Music

Playing of music starts from the first song on the card and is repeated automatically after the all the songs have been played, returning to the first song.

#### Main Lamp

Stopped state: Off  
During Play: Lights up.  
During Pause: Blinks.  
(The color changes depending on the battery level.)

#### Play Button

If it is pressed a long time, play stops. (The main lamp goes off.)  
If it is pressed briefly, play pauses. (The main lamp blinks.)

#### Jump Songs Button / Fast Forward Button

Starts playing the next song. If it is pressed continuously, it fast forwards within the same song.

#### Rewind Button

Plays from the start of the currently playing song. If it is pressed 2 times in succession, the player plays the previous song from the start.

#### Record Button

After stop, if this button is pressed, play begins from the first song during playback.

#### Volume - Button

Lowers the volume. If you continue to press on it, volume reduction is continuous.

#### Volume + Button

Raises the volume. If it is pressed continuously, the volume continues to increase.



**Absolutely do not remove the card while music is playing. When you desire to remove a card, be sure to press the [Play] button for a long time and make sure the main lamp is off before removing it.**

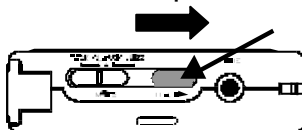
If the [Play] button is pressed and play is stopped temporarily (Pause), if the [Play] button is pressed again, the pause state is discontinued and playing of the song resumes (resume function).

However, if the following operations are performed, the resume function is canceled.

- When the [Volume –] button is pressed and you switch from the music mode to the voice memo mode.
- When the [Volume +] button is pressed and the slot is selected.
- When the [Record] button is pressed.
- When connection is made to your personal computer.
- When changing cards.
- When replacing the battery.

### To prevent malfunction (button lock)

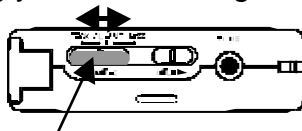
When the HyperHyde is put into a pocket, etc., it may lead to one of the buttons being pressed and causing malfunction. If the [Hold] button is moved to; the Hold position, all button operations can be disabled (locked).



It is in the Hold state when it is slid to the right.

### Changing the Sound Quality

The HyperHyde has 3 music quality modes (ROCK, CLASSIC, JAZZ). Select the sound quality that matches the song you are listening to.



Slide the button to match the sound quality to the desired level.

## Erasing Recorded Songs

### To Erase All Songs

**1**

**Make sure the HyperHyde is stopped.**

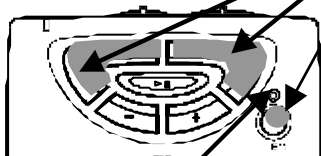
Make sure both the main lamp and record lamp are off.



**2**

**Press the [Jump Songs], button, [Rewind] button and [Record] button simultaneously.**

Press the buttons for approximately 2 seconds. All the data (including voice memos) recorded on the card will be erased at once. After erasure starts, the record lamp will blink red. When erasure is completed, the lamp will go off.



Lights up red.



**Since all the card's contents (music and voice memos) are all erased, be careful that the card you have set is the correct one.**

**Also, when 2 cards are loaded at the same time, it is necessary to select the card to be erased first. (See p. 33, (When using 2 cards).)**

### To Erase One Song Only

With reference to p 23, Recording to the HyperHyde, connect the HyperHyde to your personal computer, then delete the file for the song you desire to erase using Windows Explorer, etc.



## When Using 2 Cards

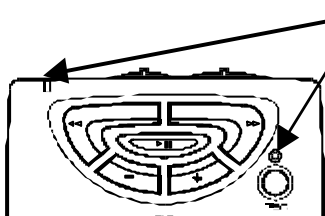
The HyperHyde is equipped with 2 card slots, a top and bottom slot, and two cards can be set at the same time. When using two cards at the same time, it is necessary to select which slot is the object before playing or recording.

### When Listening to Music

**Before pressing the [Play] button, do the following to select the slot you would like to listen to music from.**

**1**

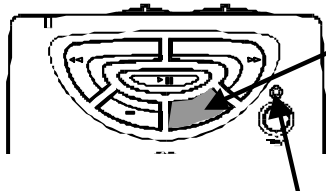
**Make sure the HyperHyde is stopped.**



Make sure the main lamp and Record lamp are both off.  
When the player is not stopped, press the [Play] button for a long time.

**2**

**Press the [Volume +] button and check the Record lamp's color.**



- Lights up orange: The top slot is selected.
- Lights up red: The bottom slot is selected.

Press the [Volume +] button several times until the slot you would like to use is selected. (The lamp's color goes off when the button is released.)

Check the lighting color.

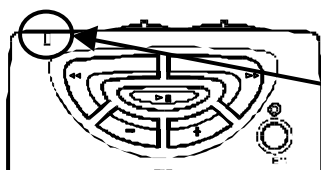
When the top slot is selected, play starts at the top slot, then proceeds to the bottom slot, then auto repeats, returning to the top slot, etc.

When the bottom slot is selected, play starts at the bottom slot, then proceeds to the top slot, then auto repeats that sequence.

## When Recording Music

**After connecting the cable, perform the following operation and select the slot you will be recording to.**

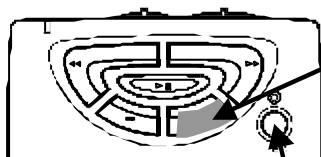
If this operation is troublesome, one card at a time can be set and recording done (even if 2 cards are set at the same time during recording, only one card is recorded to at a time).



### **1** Make sure the main lamp is off.

If the main lamp is lighted up, press the [Play] button and turn it off.

**If the main lamp is blinking, that means music is being recorded. Please wait without doing anything until recording is finished.**



### **2** Press the [Volume +] button and check the Record lamp's color.

- Lights up orange: The top slot is selected.
- Lights up red: The bottom slot is selected.

Press the [Volume +] button until the slot you desire to record to is selected. (The lamp's color goes off when the button is released.)

Check the lighting color.

After this, when the contents of the Removable Disk are displayed using Windows Explorer, etc., the contents of the card in the selected slot can be confirmed. (Carry out copying of files as usual.)

# 3 *Let's Make Voice Memos*

HyperHyde Voice Memo is a function that enables you to record your voice easily.

For example, it can be used for the following activities as well as in various other enjoyable ways.

- Use it to take memos of a conference and play it back to prepare the minutes.
- If a melody suddenly pops into your head, you can record it right on the spot and use it to make a song.
- Use it to record a message to your family that they can hear while you are away.
- Use it to keep a voice exchange diary with your friends who also have the HyperHyde.

A personal computer is not particularly necessary to record a voice memo and play it back, but since voice memos are in a format which can be handled easily by a personal computer as voice files (WAV files), it is easy to play them on the personal computer or attach them to electronic mail messages.

Since the HyperHyde is so compact, please look for new and interesting ways to use it.



Let's make voice memos.

## Recording a Voice Memo

If music is already recorded on a card, see p. 41, When music has already been recorded, then start recording voice memos.



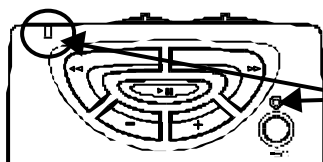
### Remark!

If no music or other voice memos have been recorded on a card, approximately 2 hours of voice memos can be recorded on a 32 Mbyte card (about half that on a 16 Mbyte card). A rough guideline is that approximately 2 Mbytes or a little less memory space on the card is used for recording about 10 minutes of voice memos.

### Check

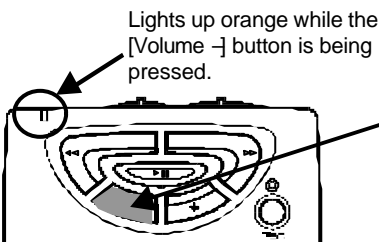
Before recording, make the following preparations, or check to make sure they have been made.

- A new size AAA battery should be inserted in the HyperHyde.
- A card should be set in the HyperHyde.



**1** Make sure the HyperHyde is stopped.

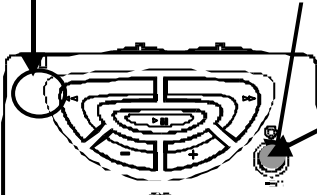
Make sure the main lamp and Record lamp are off.



**2** Press the [Volume -] button to enter the voice memo mode.

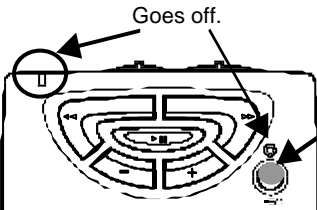
Press the [Volume -] button several times until the main lamp lights up orange. (When the main lamp lights up orange, it will go off when the [Volume -] button is released.)

- Lights up.      Blinks green:      The card has available space on it.  
Blinks orange:      The card has 2/3 or less of its capacity still available on it.  
Blinks red:      The card has 1/3 or less of its capacity still available on it.



### 3 Press the [Record] button and start recording when the Record lamp blinks.

After the Record lamp has blinked for approximately 2 seconds, (at the same time, the main lamp lights up), start recording.



### 4 To stop recording, press the [Record] button one more time.

Recording ends when the main lamp and Record lamp go off. The voice recording from the start of recording to the end of recording is saved as a single WAV file.

**If the [Play] button is pressed a long time instead of the [Record] button being pressed, the recording up to that point is canceled and the file is not saved.**



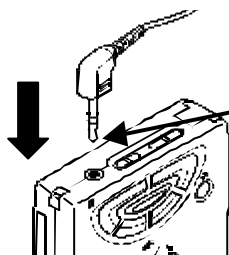
**Absolutely do not pull the card out during recording. When removing the card, be sure to press the [Record] button first and make sure the main lamp is off.**

# Opening a Voice Memo

## Check

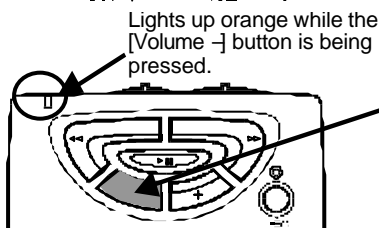
Before opening a voice memo, make the following preparations, or check to make sure they have been performed.

- A new size AAA battery should be inserted in the HyperHyde.
- A card with voice memos recorded on it should be set in the HyperHyde.



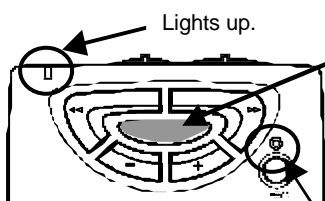
## 1 Attach the earphone.

Insert the earphone plug in the HyperHyde's earphone jack. Make sure which side of the earphone set is for the left and which for the right, then place them in your ears.



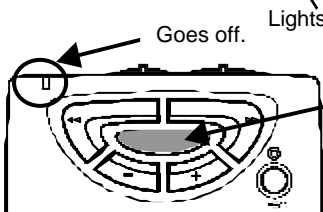
## 2 Press the [Volume -] button and enter the Voice Memo Mode.

Press the [Volume -] several times until the main lamp lights up orange. (When the [Volume -] button is released, the orange main lamp goes off.)



## 3 Press the [Play] button.

If the [Play] button is pressed, play begins from the voice memo that was recorded last only in the case that it is immediately after the voice memo was recorded, then play proceeds to the first voice memo that was recorded and plays each one in the order in which they were recorded.

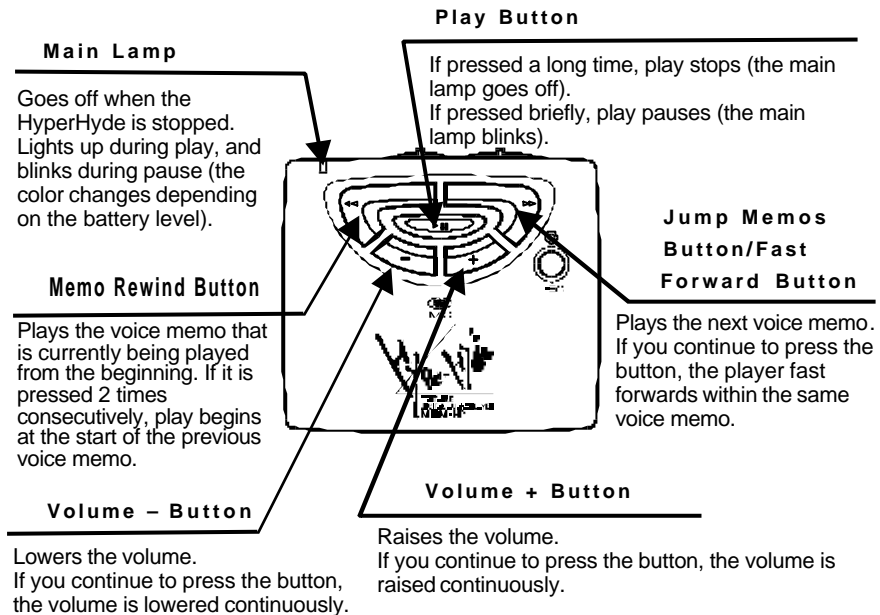


## 4 To stop play, press the [Play] button for a long time.

To stop play, press the [Play] button for 1 second or longer (the main lamp will go off). When the [Play] button is pressed briefly, it causes the player to pause (the main lamp blinks).

## Operation During Playback

When playing voice memos, play begins from the voice memo that was recorded last, then when that memo is finished, play automatically starts at the first voice memo to be recorded and continues in the order in which they were recorded.



**Check the color of the main lamp when it lights up and determine the battery level, how much charge is left.**

- Lights up green: Battery still has enough power.
- Lights up orange: Battery power is at 2/3 full charge or lower.
- Lights up red: Battery power is at 1/3 full charge or lower. Replace the battery some time soon.

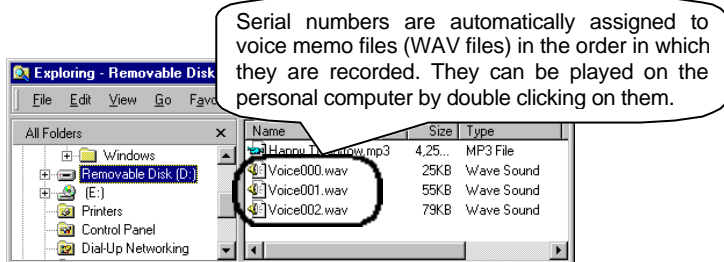


**Absolutely do not remove the card during playback. When removing the card, press the [Play] button for a long time first and make sure the main lamp is off.**

## Opening a Voice Memo

### Using Voice Memos on your Personal Computer

With reference to p. 23, Recording to the HyperHyde, display the contents of the HyperHyde's Removable Disk. The voice memo files will be recorded.



WAV files saved in the HyperHyde can be attached to electronic mail messages and played back on your personal computer. Furthermore, when editing them, please use the separate editing software.



To play voice memos (WAV files) on your personal computer, it is necessary that HyperHyde Manager be installed.

If you desire to play them on a personal computer without HyperHyde Manager installed, convert the data format in accordance with the following procedure using a personal computer where HyperHyde Manager is installed.

1. Start the Sound Recorder which is a standard feature supplied with Windows.  
(Ordinarily in Windows 95, it is started as follows. [Start] - [Programs] - [Accessories] - [Multimedia] - [Sound Recorder].  
In Windows 98, it is started as follows. [Start] - [Programs] - [Accessories] - [Entertainment] - Sound Recorder).
2. Open the target WAV file by clicking [File] - [Open].  
(At this time, it is recommended that the file be copied to the personal computer (hard disk, etc.) in advance, without trying to read it directly from the HyperHyde.)
3. Click [File] - [Save as ...].
4. If this is a voice memo, the format is MI-SC4 8,000 Hz, Monaural. Click the [Change] button.





5. Change the [Format] and [Attributes] to the following values.  
[Format]: PCM  
[Attributes]: 8,000 kHz, 8-bit, monaural
6. Click [OK].  
Check to make sure the format changes as shown in Step 5.
7. Change the location where the file is saved and the file name, then click [Save]. (If you click [Save] with it as it is, the existing file will be overwritten.)
8. That completes the conversion of your data format. Close Sound Recorder.

### When using 2 Cards

There are two cards slots in the HyperHyde, the top and bottom slots, and two cards can be set simultaneously. When using 2 cards at the same time, before playing or recording, it is necessary to select which slot is the object of the operation.

See p. 33, To Listen to Music for the selection method when playing music, etc.

When recording, files are saved in the slot that was saved the previous time. When you desire to change the selected slot, carry out the selection operation using the same method as you used when playing.

### Other Uses

Also see p. 31, To Prevent Malfunction and p. 32, Erasing Recorded Songs.

### When music has already been recorded,

When recording a voice memo on a card that already has MP3 files, etc. recorded on it, connect the HyperHyde to your personal computer, then after carrying out Defragmentation, carry out recording of voice memos (See the next page for the defragmentation method).

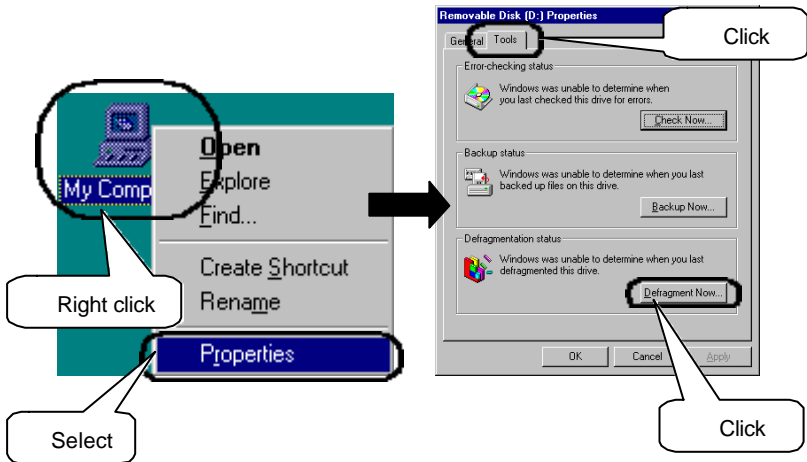
## Opening a Voice Memo

Depending on the state of the data on a card, the amount of space available on the card may not be displayed correctly by the Record lamp or the data may not be recorded normally, or some previous data can no longer be played normally.

If execution of Defragmentation is difficult, then record data on a card which has nothing recorded on it.

### [Defragmentation]

Right click on the HyperHyde drive and select Properties, then select the Tools tab and click on Optimize.



# 4

*Before Concluding that this product is broken down.*

## Trouble Q & A <Contents>

### Trouble with HyperHyde Operation

There is no response when the buttons are pressed. ....	44
The music doesn't play. ....	45
Voice Memos cannot be recorded. ....	46
Voice Memos cannot be played. ....	46
The card will not come out. ....	47
The main lamp went off during recording of a voice memo. ....	47

### Trouble with Installation

The printer port is not displayed. ....	48
The ECP Printer Mode is not displayed. ....	48
The Removable Disk is not displayed. ....	48
I-O DATA MMC Disk is not displayed. ....	49

## Trouble Q & A

In cases where there are multiple causes, the causes are explained beginning from the simplest items and progressing in order to the most difficult items, so begin troubleshooting in order from the top.

### There is no response when the buttons are pressed.

<i>Cause</i>	The battery is not installed, or the battery is dead.
<i>Remedy</i>	Make sure a battery is inserted. Try replacing the battery with a new one. Try removing the battery fully, then inserting it again. See p. 7, Inserting the Battery.
<i>Cause</i>	No card is set.
<i>Remedy</i>	If no card is set, the Play button, etc. cannot be operated at all. Please set a card in the player. See p. 9, Inserting a Card.
<i>Cause</i>	The player is in the Hold state.
<i>Remedy</i>	Check if the Hold button is in the Hold position. If it is in the Hold position, slide it in the opposite direction to release the hold state. See p. 31, to preven Malfunction (button Lock).
<i>Cause</i>	The parallel cable is connected.
<i>Remedy</i>	Disconnect the parallel cable on the HyperHyde side.. See p. 23, Recording to the HyperHyde.

**The music doesn't play.**

<i>Cause</i>	The volume is too low.
<i>Remedy</i>	Press the [Volume +] button and raise the volume. See p. 30, Operation during playing music.
<i>Cause</i>	A card is not set.
<i>Remedy</i>	If no card is set, the Play button, etc. cannot be operated at all. Please set a card in the player. See p. 9, Inserting a Card.
<i>Cause</i>	The card has no songs on it.
<i>Remedy</i>	Make sure the card is inserted correctly. You can understand which songs have been saved on the card by connecting to the personal computer. See p. 23, Recording to the HyperHyde.
<i>Cause</i>	The HyperHyde is not in the music mode.
<i>Remedy</i>	If the main lamp is lighted up, press the [Play] button for a long time, then check if the main lamp and Record lamp are off (stopped). After that, press the [Volume -] button several times until the main lamp lights up green. This is the music mode. Music will be played if the [Play] button is pressed. See p. 29, Listening to Music on the HyperHyde.
<i>Cause</i>	The [Play] button has not been pressed from the stop state.
<i>Remedy</i>	Press the [Play] button a long time, then make sure the main lamp and Record lamp are off (stopped). Then press the [Play] button to play music. See p. 29, Listening to Music on the HyperHyde.
<i>Cause</i>	The parallel cable is still connected.
<i>Remedy</i>	Disconnect the parallel cable from the HyperHyde. See p. 23, Recording to the HyperHyde.

## Voice Memos cannot be recorded.

<i>Cause</i>	A card is not set.
<i>Remedy</i>	If no card is set, the Play button, etc. cannot be operated at all. Please set a card in the player. <div>See p. 9, Inserting a Card.</div>
<i>Cause</i>	The HyperHyde is not in the voice memo mode.
<i>Remedy</i>	Press the [Play] button a long time, then make sure the main lamp and Record lamp are off (stopped). Then press the [Volume -] button several times until the main lamp lights up orange. This is the voice memo mode. If the [Record] button is pressed, recording will start (however, it will start after about 2 seconds). <div>See p. 36, Recording a Voice Memo.</div>
<i>Cause</i>	There is not sufficient space available in the card.
<i>Remedy</i>	Check if the card that is set is the correct card or not. The cards available space can be understood by connecting the HyperHyde to the personal computer. Furthermore, if no music or voice memo is recorded on the card, approximately 2 hours of voice memos can be recorded in a 32 Mbyte card. <div>See p. 27, Check the card's available space.</div>

## Voice Memos cannot be played.

<i>Cause</i>	The volume is too low.
<i>Remedy</i>	Press the [Volume +] button and raise the volume. <div>See p. 39, Operation during playback.</div>
<i>Cause</i>	A card is not set.
<i>Remedy</i>	If no card is set, the Play button, etc. cannot be operated at all. Please set a card in the player. <div>See p. 9, Inserting a Card.</div>

## Trouble Q & A

<i>Cause</i>	The HyperHyde is not in the voice memo mode.
<i>Remedy</i>	Press the [Play] button a long time, then make sure the main lamp and Record lamp are off (stopped). Then press the [Volume -] button several times until the main lamp lights up orange. This is the voice memo mode. If the [Record] button is pressed, recording will start (however, it will start after about 2 seconds). See p. 36, Recording a Voice Memo.

<i>Cause</i>	There are no voice memos recorded on the card.
<i>Remedy</i>	Make sure the card that is set is the correct card. You can understand which voice memos have been recorded on the card by connecting to the personal computer. See p. 40, Using Voice Memos on Your Personal Computer.

### The card will not come out.

<i>Cause</i>	-
<i>Remedy</i>	There is a groove in the corner of the card, so hook your fingernail in the groove and pull the card out. See p. 10, Removing Cards.

### The main lamp went off during recording of a voice memo.

<i>Cause</i>	There is no space for the card.
<i>Remedy</i>	Check the available space on the card. See p. 27, Check the card's available space. Either delete the contents of the card, and purchase a new card. Furthermore, if the card runs out of available space during recording, the voice recorded up to that point is saved automatically.

## Trouble Q & A

<i>Cause</i>	The battery is dead.
<i>Remedy</i>	Replace the battery with a new one.  See p. 7, Inserting a Battery.  Furthermore, in this case, the voice recorded up to that point is not saved. If the main lamp lights up read during recording, it is recommended that the battery be replaced with a new one.

### The printer port is not displayed.

<i>Cause</i>	The printer port is disabled.
<i>Remedy</i>	To enable the printer port (parallel port), it is necessary to change the personal computer's BIOS setting. The setting method for this differs depending on the personal computer you are using. Please refer to your computer's operation manual and enable the printer port (parallel port).

### The ECP Printer port is not displayed.

<i>Cause</i>	The printer port is not in the ECP mode.
<i>Remedy</i>	To change the printer port (parallel port) mode, it is necessary to change the personal computer's BIOS setting. The setting method for this differs depending on the personal computer you are using. Please refer to your computer's operation manual and change the printer port (parallel port) mode to the ECP mode. At this time, do not use the I/O port address 3BCh.

### The Removable Disk is not displayed.

<i>Cause</i>	It has not been installed correctly.
<i>Remedy</i>	First, uninstall the support software.  See p. 51, When deleting installed software.  Then install the software once more.  See p. 20, Installing HyperHyde Manager.



<i>Cause</i>	A drive letter is assigned, but it overlaps with that of another drive.
<i>Remedy</i>	<p>Try using the following procedure.</p> <ol style="list-style-type: none"> <li>1. Select I-O DATA MMC Disk in Device Manager, click on Properties and display the I-O DATA MMC Disk Properties. See p. 21, Checking after installation is completed.</li> <li>2. Select the Settings tab and set a drive letter that is not currently in use from among the spare drive letters.</li> <li>3. Click OK, then close I-O DATA MMC Disk Properties.</li> <li>4. Click Close, then close System Properties.</li> <li>5. The screen asking you to restart your computer will be displayed, so click Yes and restart the computer.</li> </ol>

## I-O DATA MMC Disk is not displayed.

<i>Cause</i>	Installation was not done correctly.
<i>Remedy</i>	<p>First, uninstall the support software. See p. 51, When deleting installed software.</p> <p>Then install the software once more. See p. 20, Installing HyperHyde Manager.</p>

## Simple Maintenance

### **When the player gets dirty.**

Wipe it with a soft, dry cloth.

If it is extremely dirty, wipe it with a damp cloth that has been thoroughly wrung out, then dry it by wiping with a dry cloth.

### **When it is wet.**

As quickly as possible, wipe off the water with a soft dry cloth.



### **Caution!**

1. Absolutely do not use any benzene or paint thinner to clean the HyperHyde. Doing so could cause discoloration or deformation.
2. Do not get oil on the player. Doing so could cause breakdown.

### **Inserting plugs, etc.**

Please make sure the headphone plug is always clean when in use. If the plug has dirt on it, it might cause static.

## When Deleting installed software

When the HyperHyde is no longer in use, the installed support software can be deleted (uninstalled). Uninstallation is necessary not only when you have stopped using the HyperHyde, but also before reinstalling the software.

### Uninstalling the Support Software

#### Check

Before uninstalling the software, check the following items.

- The HyperHyde should not be connected to the personal computer.
- All other applications should be closed.

**1**

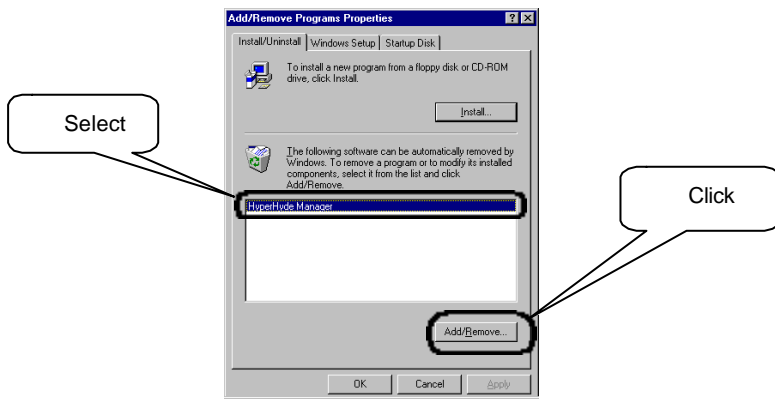
Click on Start → Settings → Control Panel, then start Add/Remove Programs



Add/Remove Programs

**2**

Select HyperHyde Manager, then click the Add/Remove button.



**3**

Proceed with processing according to the instructions on the screen. After processing is completed, when the personal computer is restarted, the Removable Disk will be deleted.



# 5

## Appendix

### Hardware Specifications

#### Basic Specifications

Model No.	MDM-H2
Media	MultiMediaCard
MMC Slots	2 Slots
Decoding Format	MP3 (32~320 Kbps)
Power Supply	Size AAA Alkaline Dry Battery × 1
Battery Driving Time	Approx. 7 hrs. (This company's measurements)
External Dimensions	47.2 × 53.5 × 16.6 mm
Weight	Body: 27 g (excluding battery) Belt Holder: 6 g
Headphone Jack	φ3.5 mm mini-pin
PC Connection Interface	Parallel
PC Connection form	Exclusive parallel port connection cable

#### Audio Specifications

Playback Distortion	0.25% or less
S/N Ratio	90dB
Headphone Output	5mW
Frequency Characteristics	± 0.5dB 20-20kHz

# Explanation of Terms

## MP3 (MPEG-1 Audio Layer 3)

The MPEG Audio standard is a standard for compression of audio information. Layer 1 can obtain a compression ratio of 1/4, Layer 2, 1/8 and Layer 3, 1/10. Since high sound quality approaching that of a music CD can be obtained, this format is convenient for compact playback devices (portable players, etc.) and for distribution over the Internet.

## MMC (MultiMediaCard)

This is the next generation of ultra-compact, ultra-light digital media (storage media). It is mainly being given attention as a media for MultiMedia devices. Besides the HyperHyde, it is used for digital cameras, etc. Since it uses Removable technology, it can have a large capacity and be flexible, and can be handled with the ease of handling of MD or cassette tapes.

## Encode / Decode

Encoding is to convert data to code in accordance with a fixed standard, or it specifies software or hardware that accomplishes this task. Decoding is to return the encoded data to their original form.

## Sampling Rate

This is the interval time at which sampling is carried out. Units are seconds. The number of times sampling is done per second is the Hz (Hertz) unit, the greater the sampling rate, etc., the more accurate data becomes, but at the same time, the volume of data increases. Generally, the sampling rate for a music CD is 44 kHz.

## Bit Rate

This is the speed at which 1 bit is transferred.

## Explanation of Terms

### Parallel Port

This is an input / output connector for connecting peripheral devices to a personal computer, and the printer port is representative of such ports. As opposed to the parallel port (where there are multiple data lines), there is the serial port (= RS-232C, with 1 data line) which is used as an input / output connector for connecting to modems, etc.

There are 3 modes for parallel ports, the SPP mode, the EPP mode and the ECP mode (their names may differ), and the SPP mode is an exclusive output mode which is premised for use with printers, etc. The EPP mode and ECP mode are bi-directional modes with both input and output, and it is presumed that the HyperHyde uses the ECP mode. This mode is changed by changing the BIOS settings in the personal computer.